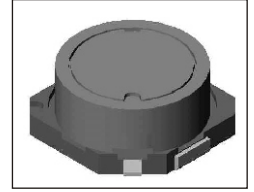


# SMT Power Inductor

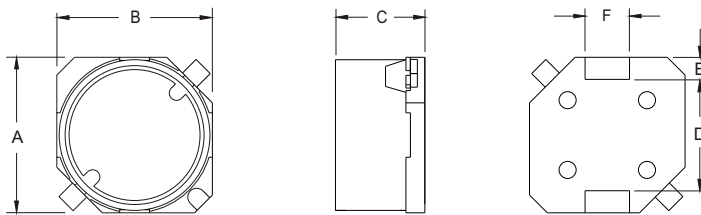
## SIWC73 Type

### Features

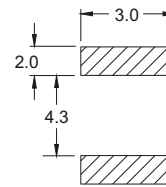
- RoHS compliant.
- Small size (7.3mm\*7.3mm), low profile (3.5mm max. height) SMD type.
- Magnetically shielded, suitable for high density mounting.
- High energy storage and low DCR.
- Provided with embossed carrier tape packing.
- Ideal for power source circuits, DC-DC converter, DC-AC inverters inductor application.
- In addition to the standard versions shown here, customized inductors are available to meet your exact requirements.



### Mechanical Dimension:



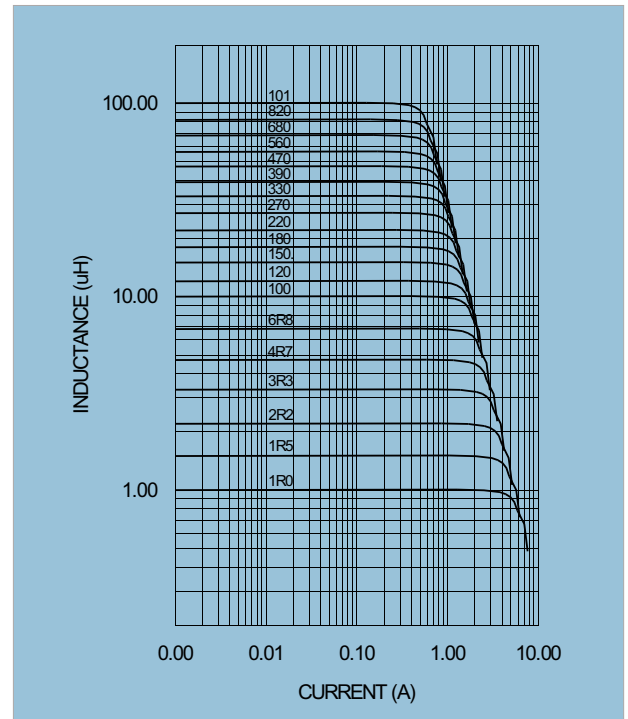
### RECOMMENDED PAD PATTERNS



UNIT:mm/inch  
 A = 7.6 / 0.299 Max.  
 B = 7.6 / 0.299 Max.  
 C = 3.5 / 0.138 Max.  
 D = 5.3±0.1 / 0.209±0.004  
 E = 1.0 / 0.039  
 F = 2.0 / 0.079

### Electrical Characteristics: 25°C: 100KHz, 0.1V

PART NO.	L <sup>1</sup> (uH)	DCR (Ω) MAX	I <sub>rated</sub> <sup>2</sup> (Adc)
SIWC73 - 1R0	1.0	0.019	3.12
SIWC73 - 1R5	1.5	0.023	2.85
SIWC73 - 2R2	2.2	0.028	2.66
SIWC73 - 3R3	3.3	0.035	2.26
SIWC73 - 4R7	4.7	0.043	1.96
SIWC73 - 6R8	6.8	0.055	1.76
SIWC73 - 100	10.0	0.080	1.34
SIWC73 - 120	12.0	0.090	1.23
SIWC73 - 150	15.0	0.120	1.09
SIWC73 - 180	18.0	0.130	0.99
SIWC73 - 220	22.0	0.150	0.90
SIWC73 - 270	27.0	0.210	0.81
SIWC73 - 330	33.0	0.250	0.72
SIWC73 - 390	39.0	0.310	0.67
SIWC73 - 470	47.0	0.350	0.60
SIWC73 - 560	56.0	0.430	0.55
SIWC73 - 680	68.0	0.520	0.50
SIWC73 - 820	82.0	0.600	0.46
SIWC73 - 101	100.0	0.790	0.41



1. Tolerance of inductance: ±20%.
2. I<sub>rated</sub> is the DC current which cause the inductance drop 10% typical of its nominal inductance without current and the surface temperature of the part increase less than 45°C.
3. Operating temperature : -20°C to 105°C (including self-temperature rise).



**DELTA ELECTRONICS, INC.**

(TAOYUAN PLANT CPBG) 252, SAN YING ROAD, KUEISAN INDUSTRIAL ZONE, TAOYUAN SHIEN, 333, TAIWAN, R.O.C.

TEL: 886-3-3591968; FAX: 886-3-3591991

<http://www.deltawww.com>